

让中国装备技术与世界同步
WE WALK ALONGSIDE THE WORLD

Stock code:300415

YIZUMI伊之密

YR

注塑机专用机械手
YIZUMI ROBOT

广东伊之密精密注压科技有限公司
Guangdong Yizumi Precision Injection Molding and Die Casting Technology Co., Ltd.
地址:中国广东省佛山市顺德区大良五沙居委会顺昌路12号
Address: No.12, Shunchang Road, Daliang, Shunde, Foshan, Guangdong Province, China 528306
TEL: 86-757-2926 2215 Email: imm@yizumi.com www.yizumi.com



伊之密公司简介

立志成为所在领域世界级企业



伊之密顺德容桂总部
Yizumi's headquarters in Ronggui, Shunde



顺德五沙生产基地
Wusha production base in Shunde



苏州吴江生产基地
Wujiang production base in Suzhou

轻合金及高分子复合材料模型成型工艺的广泛应用,改变了近代的工业制造模式,使低成本大批量生产成为可能。今天,以铝、镁、锌为代表的轻合金,及以塑料、橡胶为代表的高分子复合材料,已成为工业制品和消费产品不可或缺的重要组成原料,从而带动相关的模压成型装备的飞速发展。

2002年,公司在佛山市顺德区容桂镇四基生产出第一台伊之密塑料注射成型机,随后,伊之密相继推出铝、镁、锌合金压铸机、橡胶注射机和机器人自动化集成系统,并得到了越来越多模压成型行业知名客户的认可和信赖。现在,在中国市场,伊之密注塑机已经位列业内前三名,压铸机、橡胶机均位列行业前二。

2015年1月23日,伊之密成功登录深交所A股市场,开启企业发展的新征程。13年来,伊之密一直致力于让中国装备技术与世界同步,着力提高自身的技术实力、产品质量和服务。上市后,伊之密继续朝着这个方向努力,锁定“成为所在领域的世界级企业”的新目标,围绕模压成型专用机械设备领域多元化地延伸产品,创新产品研发和企业运营方式,积极布局全球市

场,最终让全球的客户和同行都认可伊之密的产品和品牌。

今天,伊之密除了拥有占地8000m²的顺德高新区生产基地外,顺德五沙生产基地(占地81117m²)和苏州吴江生产基地(一期占地33213m²)已全面投产,满足伊之密未来五到十年的发展需要。另外,伊之密在全球市场运行“伊之密”和“HPM”双品牌战略,在北美、印度设立生产基地,开拓和巩固伊之密的国外市场。

为进一步把产品做到精益求精,伊之密引入IPD产品集成研发管理模式,从客户需求出发,以严谨的流程开发产品,完善产品升级换代。投入累计超过1.2亿元人民币,打造属于伊之密自己的精密制造平台,并投资建设恒温计量检测中心,全力升级产品质量。

为客户创造更大价值及更佳的投资回报,是我们存在的意义。今后,我们将在节能技术、自动化技术、精密控制技术、产品无故障技术等领域作更大投入,持续保证产品的先进性和可靠性。同时,我们还将致力建设业内更佳服务体系,提供快速、准确的服务,为提高全球客户竞争力不懈努力。

About Yizumi

We aspire to become a world-class enterprise in our field!

With the widespread application of compression molding technology of light alloy and polymer-based composite, the mode of modern industrial manufacture has been changed and massive production with low-cost becomes possible. Today, light alloy exemplified by aluminum, magnesium and zinc, and polymer composites represented by plastics and rubber have become indispensable raw materials of industrial and consumer products. The relevant molding machinery industry thus achieves rapid development.

At the beginning of 2002, Yizumi manufactured the first injection molding machine in Siji, Ronggui Subdistrict. Then Yizumi launched die casting machines for aluminum, magnesium and zinc alloy, rubber injection machines and robotic automated integrated systems, obtaining high recognition from more and more well-known customers in the molding industry. Yizumi ranks top three among Chinese injection molding machine manufacturers and top two among both Chinese die casting machine manufacturers and rubber injection machine manufacturers.

On January 23, 2015, Yizumi successfully launched an IPO on the A-share market of Shenzhen Stock Exchange, which was a new start for the company's development. Yizumi has been committed to improve Chinese equipment technology to walk alongside the world and enhance its technical strength, product quality and service for 13 years. Yizumi will keep forward as always, set the new goal as becoming a world-class enterprise in the industry, diversify the products around the area of molding machinery for special applications, make innovations in the research and development of products as

well as enterprise operation, so that Yizumi's products and brands are recognized by customers and counterparts worldwide.

In addition to the manufacturing base that covers an area of 80,000m² in Shunde National Hi-tech Industrial Zone, Yizumi's Wusha Factory (covering 81,117m²) and Suzhou factory (1st stage land area of 33,213m²) also have been put into use, which will meet the development needs of Yizumi in the next five to ten years. Yizumi also implements the YIZUM-HPM dual brand strategy in global markets and builds overseas bases in North America and India to develop and consolidate foreign markets.

To further improve the products, Yizumi introduces IPD mode to develop the products following strict procedures and upgrade the products based on customer needs. Yizumi has spent over 120 million RMB building its own precision manufacturing platform and invested in building a constant-temperature measuring and testing center to fully improve the product quality.

The greatest significance of Yizumi's existence lies in creating more value and better investment return for customers. In the future, the company will devote more input to areas such as technology of energy-saving, automation, precision control and trouble-free products so as to make sure our products are advanced and reliable. Meanwhile, we will be dedicated to setting up the better service system in the industry to provide rapid and quality service, making unremitting endeavor to improve the competitiveness of customers worldwide.

宗旨:我们致力于让中国装备技术与世界同步,并为全球客户创造更佳的投资回报和客户体验。

使命:五年内成为中国领先的装备制造制造商,并于主要新兴市场建立全球经营系统,成为真正的“全球化”企业。

愿景:成为一家经营好、管理好、文化好、让员工引以为傲,为社会仰慕及尊敬的企业,永续经营。

Aim: We are dedicated in providing global clients with better investment return and customer experience.

Mission: We are determined to become a leading Chinese machine manufacturer in five years and a real globalized enterprise with establishment of global business system in major rising markets.

Vision: We wish to become a long-lasting enterprise with effective operation, efficient management and excellent culture, of which the employees are proud and to which social respect are showed.

机械手选型导引 ROBOT SELECTION GUIDE

系列 Series		型号 Model	锁模力(吨) Clamping force (ton)	60	90	120	160	200	260	320	350	400	450	480	500	560	650	700	800	1000	1100	1200	1300	1400	1600	1800	2000	2100	2200	2400	2600	2700	3200
标准单轴机械手 Standard single-axis robot	YR31	YR3108D																															
		YR3108DS																															
		YR3110DS																															
		YR3110D																															
标准三轴机械手 Standard three-axis robot	YR63	YR6308																															
		YR6308DS																															
		YR6308S																															
	YR67	YR6710																															
		YR6710S																															
		YR6712																															
		YR6712S																															
		YR6715DS																															
	YR75	YR7518DS																															
		YR7522DS																															
	YR77	YR7722DS																															
		YR7725DS																															
		YR7730DS																															
高速两轴机械手 High-speed two-axis robot	YR3210	YR3210DSG																															
高速三轴机械手 High-speed three-axis robot	YR6610	YR6610DSG																															
	YR71	YR7110S																															
高速模内贴标系统 High-speed in-mold labeling system	YR8	YR830																															
		YR840																															
		YR850																															
旋臂式机械手 Swing arm robot	YR2	YR255C																															

YR31单轴伺服机械手

YR31 SINGLE-AXIS SERVO ROBOT



长寿命 Long life

轻量化的组件, 减少对横行的负荷, 因此降低机械手的故障频率, 实现机械手更长寿命, 电磁阀组完全密封, 避免油污、粉尘侵蚀, 可增加使用寿命。

Lightweight components reduce the load on traverse and lower the failure rate of the robot, so that it becomes more durable. The electromagnetic valves are completely sealed to prevent oil stain and dust and prolong the service life.



高安全性 High safety

电控线路终端配线无空中接头, 避免接头腐蚀发生接触不良, 手臂下段位置附带检知开关及防落设备, 安全性高。

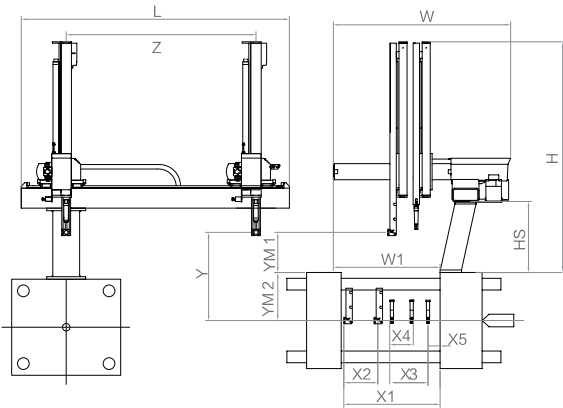
Secure electrical circuit wiring without suspended connectors avoids poor connection due to the connector corrosion. The lower arm has a detection switch and an anti-falling device, which is very safe.



适用性广 Wide application range

模外横行可实现多点定位, 适应后续不同要求使用。

Multipoint positioning is available for out-mold traverse, which is geared to different application requirements.



单轴AC伺服

Single AC servo driven axis

内置单轴AC伺服闭环式控制加气动机构, 教导式自由编辑程式操作便利, 多语种菜单式真彩触摸屏操作界面。

Closed-loop AC servo control and pneumatic mechanism of the single axis, instructive free programming and operation, true color touch screen with multi-language menu style interface are available.

双截式上下行程

Vertical telescopic arm for upper/lower stroke

双截式上下行程, 采用倍速机构, 速度快适应低厂房设计。

The compact vertical telescopic arm doubles the moving speed and it is suitable for low-ceiling factory.

产品参数 Specifications

机型 Model	主臂最 远位置	主臂引 拔行程	副臂最 远位置	副臂引 拔行程	副臂最 近位置	手臂上 下行程	待机 高度	安装面 下行长度	机器 宽度	机器 长度	横行 行程	机器 高度	底座 高度	负载	适用 注塑机
	X1 (mm)	X2 (mm)	X3 (mm)	X4 (mm)	X5 (mm)	Y (mm)	YM1 (mm)	YM2 (mm)	W (mm)	L (mm)	Z (mm)	H (mm)	Hs (mm)	Payload (kg)	IMM (ton)
YR3108D	640	150	340	150	50	800	350	450	1290	1820	1280	1380	500	3	60-260T
YR3108DS	640	150	/	/	/	800	350	450	1290	1820	1280	1380	500	3	60-260T
YR3110D	900	150	600	150	50	1000	380	620	1490	2000	1400	1480	550	3	160-320T
YR3110DS	900	150	/	/	/	1000	380	620	1490	2000	1400	1480	550	3	160-320T

D: telescopic arm 双截; S: single arm 单臂

YR63三轴伺服机械手

YR63 THREE-AXIS SERVO ROBOT

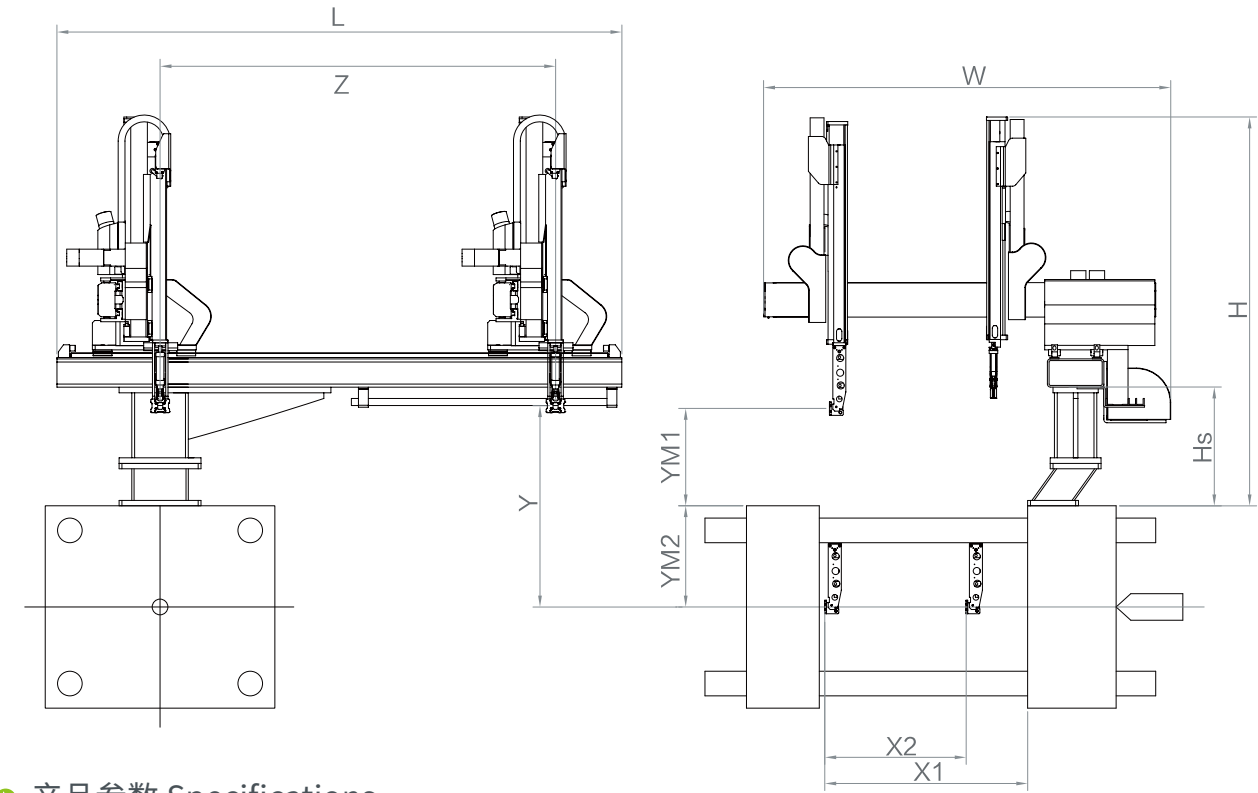
主横梁、铝合金挤型手臂、引拔梁、线性滑轨、皮带传动
Main beam, aluminum extrusion arm, crosswise, linear guideway, belt drive

低噪音
Low noise

超高速
High speed

高精度
High precision

低震动
Low vibration



产品参数 Specifications

机型 Model	主臂最 远位置	主臂引 拔行程	副臂最 远位置	副臂引 拔行程	副臂最 近位置	手臂上 下行程	待机 高度	安装面 下行长度	机器 宽度	机器 长度	横行 行程	机器 高度	底座 高度	负载	适用 注塑机
	X1 (mm)	X2 (mm)	X3 (mm)	X4 (mm)	X5 (mm)	Y (mm)	YM1 (mm)	YM2 (mm)	W (mm)	L (mm)	Z (mm)	H (mm)	Hs (mm)	Payload (kg)	IMM (ton)
YR6308	780	500	590	500	90	800	350	450	1440	2000	1400	1780	500	3	60-260T
YR6308DS	780	700	/	/	/	800	350	450	1440	2000	1400	1410	490	3	60-260T
YR6308S	780	700	/	/	/	800	350	450	1500	2000	1400	1780	500	3	60-260T

D: telescopic arm 双截; S: single arm 单臂



全开放式模块化设计

Fully open modular design

全开放式简洁布局及模块化设计便于维护，正反向安装变更更加方便，治具采用便挂式组装，更具人性化处理。
Fully open, concise layout and modular design are convenient for maintenance. Forward and reverse installation is interchangeable. Easily mounted fixtures are more user-friendly.

横梁型钢加焊扁铁工艺

Structural steel combined with welded flat iron

横梁型钢加焊扁铁工艺，增加滑轨安装面的精度，锁紧力及强度。
The beam is made of structural steel and welded flat iron, increasing the precision, locking force and strength of the rail mounting surface.

YR67三轴伺服机械手

YR67 THREE-AXIS SERVO ROBOT



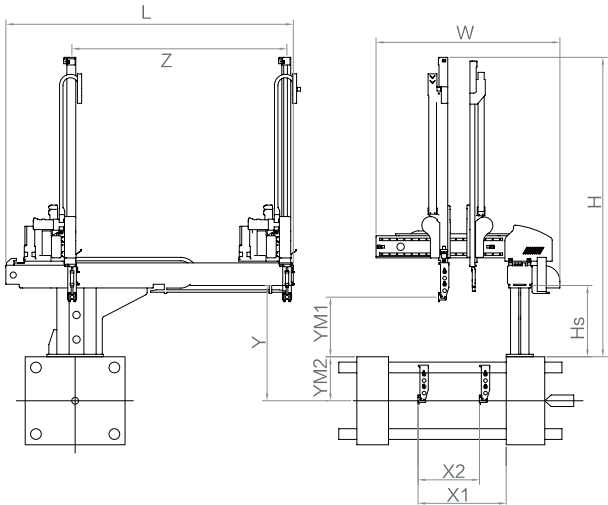
高精度传动机构 High accuracy transmission mechanism

高精度滑轨配合精密齿轮传动机构以实现低震动高速运动, 确保机构低噪音超高速等特点
The coordination of the high precision slide-rail and precision gear transmission mechanism enables the arm to move at high speed with low vibration. The transmission mechanism also features low noise and super high speed, etc.



全开放式模块化设计 Fully open modular design

全开放式简洁布局及模块化设计便于维护, 正反向安装变更更加方便, 治具采用便挂式组装, 根据人性化设计。
Fully open, concise layout and modular design are convenient for maintenance. Forward and reverse installation is interchangeable. Easily mounted fixtures are more user-friendly. available.



欧洲概念设计 European concept based design

精巧严谨的结构, 运转顺畅、快速、平稳
Sophisticated structure and smooth, fast and steady operation



产品参数 Specifications

机型 Model	主臂最远位置 X1 (mm)	主臂引拔行程 X2 (mm)	副臂最远位置 X3 (mm)	副臂引拔行程 X4 (mm)	副臂最近位置 X5 (mm)	手臂上下行程 Y (mm)	待机高度 YM1 (mm)	安装面下行长度 YM2 (mm)	机器宽度 W (mm)	机器长度 L (mm)	横行程 Z (mm)	机器高度 H (mm)	底座高度 Hs (mm)	负载 Payload (kg)	适用注塑机 IMM (ton)
YR6710	900	700	600	500	190	1000	420	580	1690	2340	1750	2320	580	8	220-380T
YR6710S	900	750	/	/	/	1000	420	580	1690	2340	1750	2320	580	8	200-350T
YR6712	900	700	690	500	190	1200	420	780	1690	2340	1750	2460	580	8	280-400T
YR6712S	900	750	/	/	/	1200	420	780	1690	2340	1750	2460	580	8	320-480T
YR6715DS	1400	1200	/	/	/	1500	480	1020	2350	3120	2500	2400	700	15	450-1000T

D: telescopic arm 双截; S: single arm 单臂

YR75三轴伺服双截机械手

YR75 THREE-AXIS TELESCOPIC SERVO ROBOT



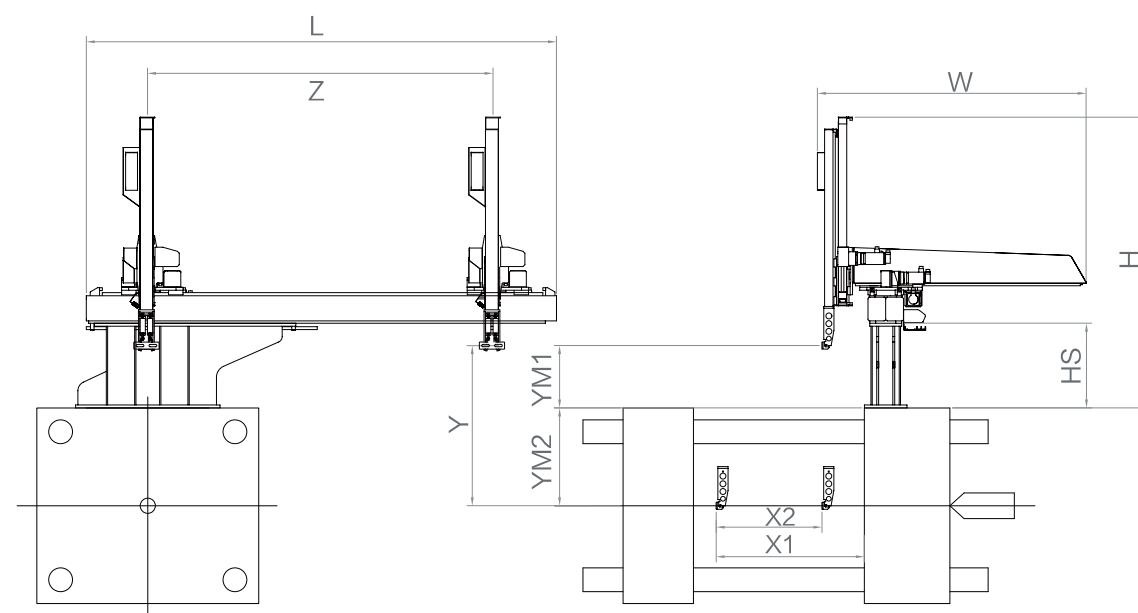
精密线性滑轨
Precision linear guideway



铝合金挤型手臂
Aluminum extrusion arm



全开放式模块化设计
Fully open modular design



产品参数 Specifications

机型 Model	主臂最 远位置 X1 (mm)	主臂引 拔行程 X2 (mm)	手臂上 下行程 Y (mm)	待机 高度 YM1 (mm)	安装面 下行长度 YM2 (mm)	机器 宽度 W (mm)	机器 长度 L (mm)	横行 行程 Z (mm)	机器 高度 H (mm)	底座 高度 Hs (mm)	负载 Payload (kg)	适用 注塑机 IMM (ton)
YR7518DS	1785	1320	1800	500	1300	2480	4110	3120	2490	700	15	650-1300T
YR7522DS	1785	1320	2200	550	1650	2480	4160	3120	2730	700	15	800-2000T

D: telescopic arm 双截; S: single arm 单臂; Double arms are optional 可选双臂



横梁型钢加焊扁铁工艺

Structural steel combined with welded flat iron

横梁型钢加焊扁铁工艺, 增加滑轨安装面的精度, 锁紧力及强度。

The beam is made of structural steel and welded flat iron, increasing the precision, locking force and strength of the rail mounting surface.

牛头式布局

Three-sided open design

重心后置致使用力臂更短, 耐用性更高, 且增加更多的治具应用空间范围

Rear gravity makes the arm of force shorter, increases the durability and adds more space to the gripper.

引拔一体化设计

Integrated crosswise design

引拔和电箱完美结合, 电箱内置于引拔内

Perfect combination: The electrical cabinet is installed in the crosswise.

可选配伺服C轴 (A+B+C轴可选)

Optional servo C axis (A+B+C axes are optional)

使后续工艺处理更灵活且精度更高

Subsequent processing is more flexible and accurate.

YR77三轴伺服双截机械手

YR77 THREE-AXIS TELESCOPIC SERVO ROBOT



大负荷 Heavy load

超大的负重能力，满足不同的生产需求。
High payload capacity meets different production needs.



精密性齿轮传动机构

Precision gear transmission mechanism



低噪音

Low noise



超高速

High speed



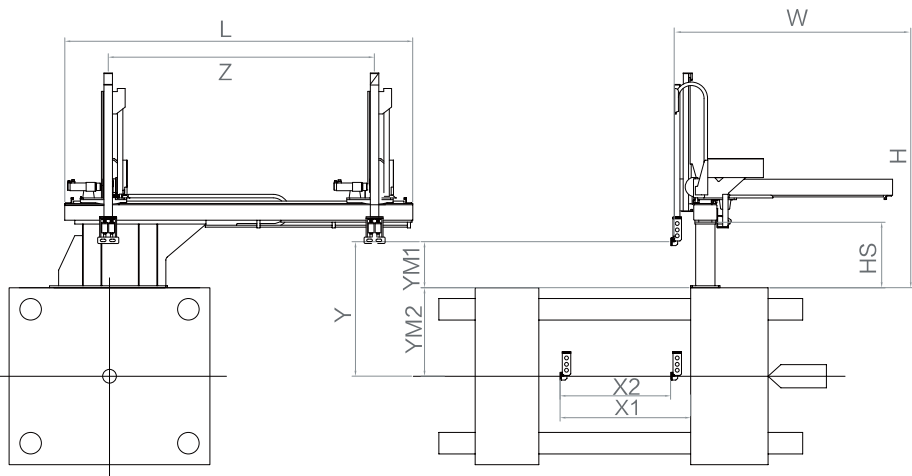
高精度

High precision



低震度

Low vibration



产品参数 Specifications

机型 Model	主臂最远位置	主臂引拔行程	手臂上下行程	待机高度	安装面下行长度	机器宽度	机器长度	横行行程	机器高度	底座高度	负载	适用注塑机
	X1 (mm)	X2 (mm)	Y (mm)	YM1 (mm)	YM2 (mm)	W (mm)	L (mm)	Z (mm)	H (mm)	Hs (mm)	Payload (kg)	IMM (ton)
YR7722DS	2250	1720	2200	680	1520	3000	5050	4000	2980	850	50	800-2200T
YR7725DS	2250	1720	2500	730	1770	3000	5050	4000	3210	900	50	1300-2600T
YR7730DS	2250	1720	3000	780	2220	3000	5050	4000	3260	950	75	1300-4000T

D: telescopic arm 双截; S: single arm 单臂



全轴AC伺服

AC servo axes

全闭环式控制保证机器运动精度及可靠性，教导式自由编辑程式操作便利，为多种语种菜单式真彩触摸屏操作界面。
Fully closed-loop control ensures the accuracy and reliability of the movements. Intuitive free programming is convenient for operation. A true color touch screen with multi-language menu style interface is available.

牛头式布局

Three-sided open design

重心后置致使用力臂更短，耐用性更高，且增加更多的治具应用空间范围
Rear gravity makes the arm of force shorter, increases the durability and adds more space to the gripper.

可选配伺服C轴 (A+B+C轴可选)

Optional servo C axis (A+B+C axes are optional)

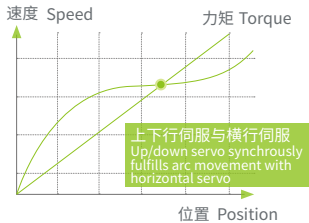
使后续工艺处理更灵活且精度更高
Subsequent processing is more flexible and accurate.

YR3210高速两轴伺服机械手

YR3210 HIGH-SPEED TWO-AXIS SERVO ROBOT

采用上下伺服与横行伺服同步到达弧线运动，结合模内下行待机等功能，生产周期短，同时具备三轴简易码垛等特点。

Simultaneous servo-driven vertical and horizontal movements and functions like in-mold down standby effectively shorten the production cycle. The robot is also characterized by three-axis simple stacking.



手臂伺服配置适用于高速上下快速移动之结构上，为您提供更大便利。
Servo arm configuration is suitable for high speed upward and downward motions, which is much more convenient for user.



稳定产品质量
Stable product quality



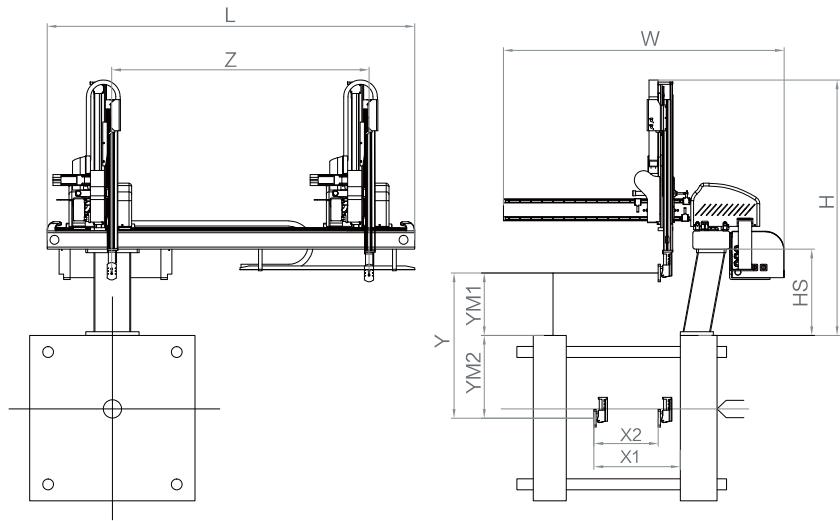
提高生产效率
Higher productivity



降低废品率
Lower scrap rate



降低生产成本
Reduced production cost



产品参数 Specifications

机型 Model	主臂最远位置 X1 (mm)	主臂引拔行程 X2 (mm)	手臂上下行程 Y (mm)	待机高度 YM1 (mm)	安装面下行长度 YM2 (mm)	机器宽度 W (mm)	机器长度 L (mm)	横行行程 Z (mm)	机器高度 H (mm)	底座高度 Hs (mm)	负载 Payload (kg)	适用注塑机 IMM (ton)
YR3210DSG	760	200	1000	450	550	1550	2300	1700	1628	570	2	200-400T



全开放式模块化设计

Fully open modular design

全开放式简洁布局及模块化设计便于维护，正反方向安装变得更加方便，治具采用便挂式组装，更具人性化处理，真空负压值在线实时监测。

Fully open, concise layout and modular design are convenient for maintenance. Forward and reverse installation is interchangeable. Easily mounted fixtures are more user-friendly. Online monitoring of vacuum negative pressure is available.

双轴AC伺服

Double AC servo driven axes

双轴AC伺服闭环式控制加气动机构，教导式自由编辑程式操作便利，多语种菜单式真彩触屏屏操作界面。

Double-axis AC servo closed-loop control and pneumatic mechanism, instructive free programming and operation, true color touch screen with multi-language menu style interface are available.

铝合金剂型结构设计

Extruded aluminum profile structure design

一体成型铝型材工艺

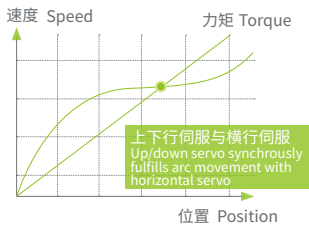
One-piece aluminum profile forming process is adopted

YR6610高速三轴伺服机械手

YR6610 HIGH-SPEED THREE-AXIS SERVO ROBOT


采用上下伺服与横行伺服同步到达弧线运动，结合模内下行待机等功能，生产周期短，同时具备三轴简易码垛等特点。

Simultaneous servo-driven vertical and horizontal movements and functions like in-mold down standby effectively shorten the production cycle. The robot is also characterized by three-axis simple stacking.




手臂伺服配置适用于高速上下快速移动之结构上，为您提供更大便利。


Servo arm configuration is suitable for high speed upward and downward motions, which is much more convenient for user.




稳定产品质量
Stable product quality



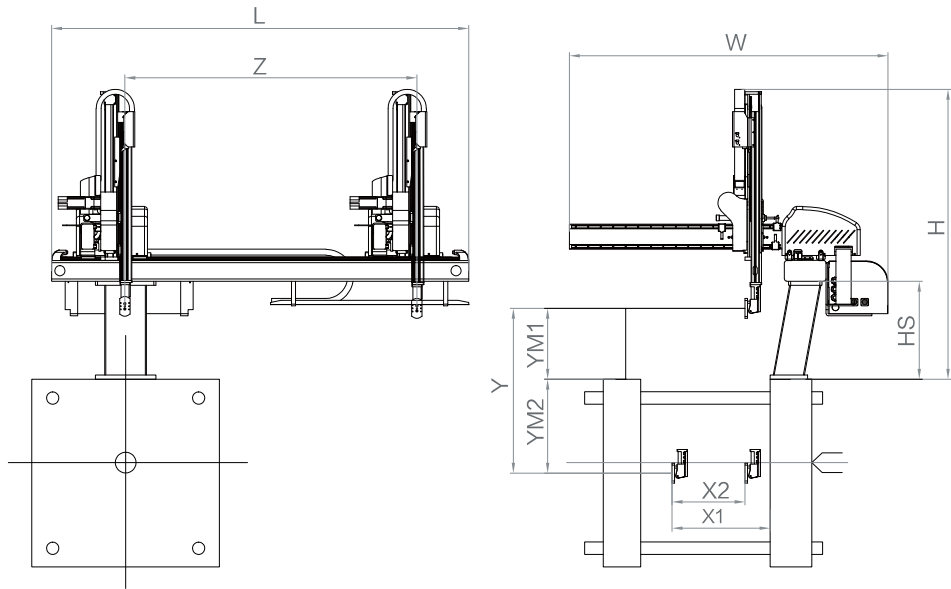
提高生产效率
Higher productivity



降低废品率
Lower scrap rate



降低生产成本
Reduced production cost



产品参数 Specifications

机型 Model	主臂最远位置 X1 (mm)	主臂引拔行程 X2 (mm)	手臂上下行程 Y (mm)	待机高度 YM1 (mm)	安装面下行长度 YM2 (mm)	机器宽度 W (mm)	机器长度 L (mm)	横行行程 Z (mm)	机器高度 H (mm)	底座高度 Hs (mm)	负载 Payload (kg)	适用注塑机 IMM (ton)
YR6610DSG	760	700	1000	450	550	1550	2300	1700	1628	570	2	100-400T



全开放式模块化设计

Fully open modular design

全开放式简洁布局及模块化设计便于维护，正反方向安装变得更加方便，治具采用便挂式组装，更具人性化处理，真空负压值在线实时监测。

Fully open, concise layout and modular design are convenient for maintenance. Forward and reverse installation is interchangeable. Easily mounted fixtures are more user-friendly. Online monitoring of vacuum negative pressure is available.

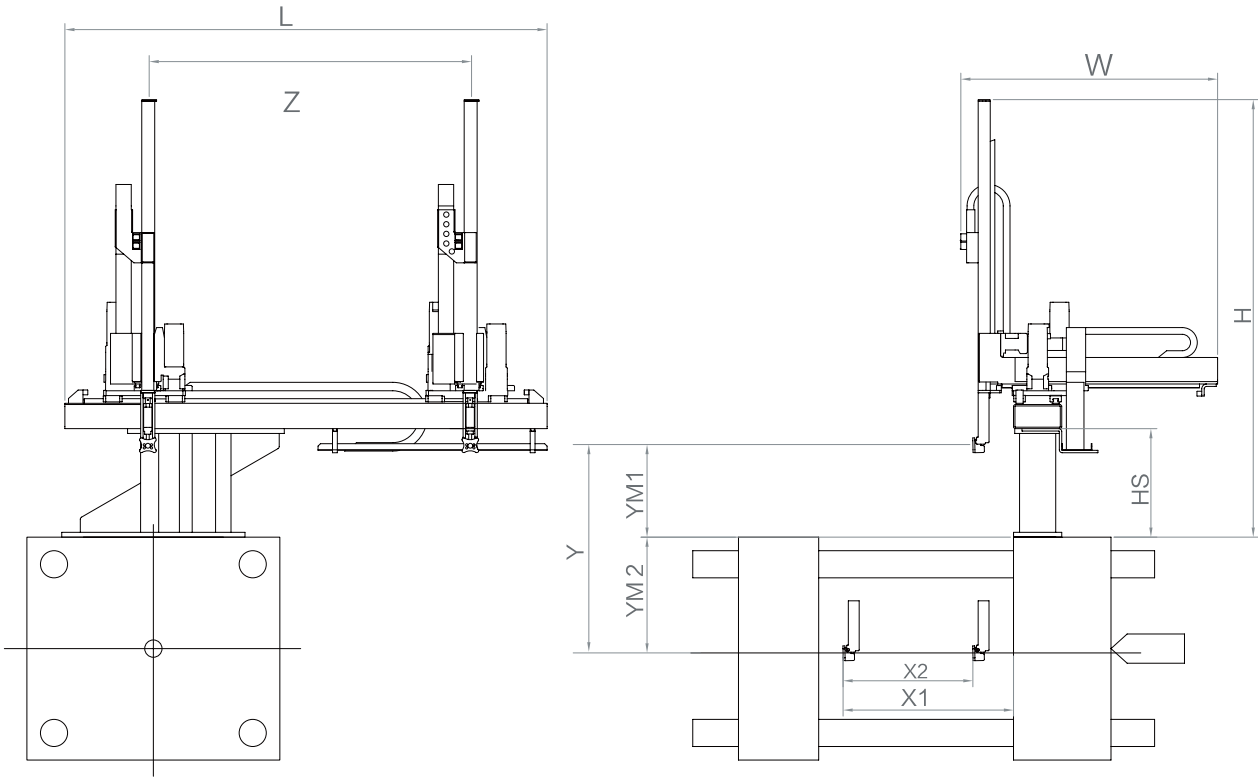
铝合金剂型结构设计

Extruded aluminum profile structure design

一体成型铝型材工艺
One-piece aluminum profile forming process is adopted

YR71三轴伺服超高速机械手

YR71 HIGH-SPEED THREE-AXIS
SERVO ROBOT



产品参数 Specifications

机型 Model	主臂最 远位置 X1 (mm)	主臂引 拔行程 X2 (mm)	手臂上 下行程 Y (mm)	待机 高度 YM1 (mm)	安装面 下行长度 YM2 (mm)	机器 宽度 W (mm)	机器 长度 L (mm)	横行 行程 Z (mm)	机器 高度 H (mm)	底座 高度 Hs (mm)	负载 Payload (kg)	适用 注塑机 IMM (ton)
YR7110S	620	450	1000	380	620	1065	2000	1400	1920	450	5	200-400T

S: single arm 单臂



数显可视化强
Digital display

设置方便全程监控
Easy settings and whole-process monitoring

高惯量全轴AC伺服驱动
High-inertia AC servo motor driven axis

全闭环式控制保证机器运动精度及可靠性, 教导式自由编辑程式操作便利, 为多种语种菜单式真彩触摸屏操作界面。
Fully closed-loop control ensures the accuracy and reliability of the movements. Intuitive free programming is convenient for operation. A true color touch screen with multi-language menu style interface is available.

高精度传动机构
High accuracy transmission mechanism

高精度滑轨配合精密齿轮传动机构以实现低振动高速运动, 确保机构低噪音超高速等特点。
The coordination of the high precision slide-rail and precision gear transmission mechanism enables the arm to move at high speed with low vibration. The transmission mechanism also features low noise and super high speed, etc.

YR8高速模内贴标系统

YR8 IN-MOLD LABELING SYSTEM

- 更高速 Faster**

最快时间只需3秒以内即可完成整个贴标、取出、排列等生产周期。

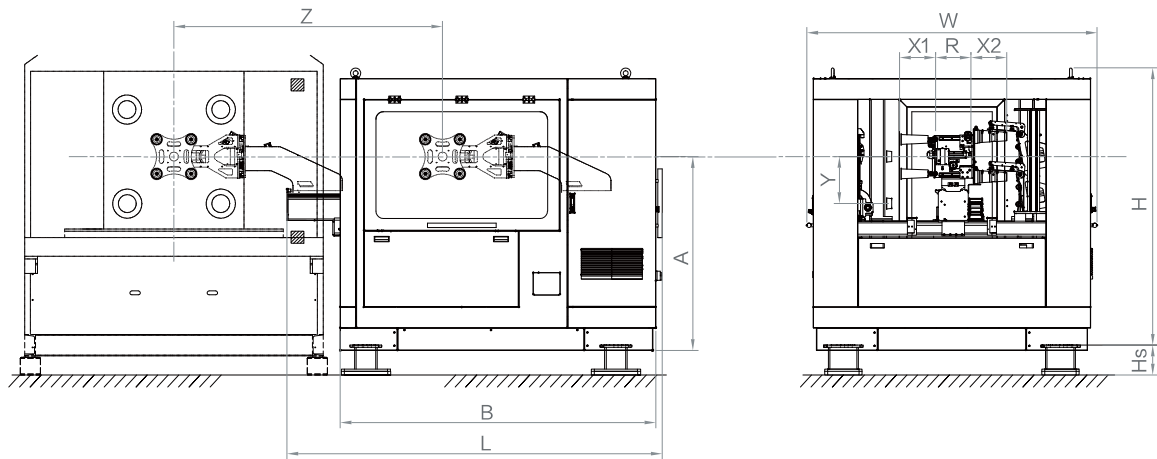
It takes no more than 3 seconds for the system to complete the whole cycle, including labeling, removal and placement.
- 更稳定 More stable**

掉标率仅为千分之二。

Defective rate is less than 0.2%.
- 更环保 More environmentally friendly**

一体成型效果永久, 精美印刷, 具环保材质, 产品附加值更高。

The integrated injection molding process produces parts with wear-resistant, well-printed and eco-friendly labels, as well as higher added value.



产品参数 Specifications

机型 Model	主臂最 远位置 X1 (mm)	主臂引 拔行程 X2 (mm)	手臂上 下行程 Y (mm)	机器 宽度 W (mm)	机器 长度 L (mm)	横行 行程 Z (mm)	机器 高度 H (mm)	模中心到 地面距离 A (mm)	机架 长度 B (mm)	适用 注塑机 IMM (ton)
YR830	90	90	500	1700	2510	1700	1770	1300	2180	90-260T
YR840	40	40	800	1300	2370	1700	1820	1270	1880	90-260T
YR850	450	450	400	2200	2840	2300	1920	1400	2580	260-700T



灵活的卡匣堆叠设计

Flexible cartridge and stacking system design

卡匣、堆叠系统方向灵活, 支持快捷转换。

The direction of the cartridge and stacking system is flexible and quick change is available.

机械结构设计(模块化、轻量化)

Modular and lightweight mechanical design

机械结构设计经过有限元受力分析等措施, 保证各标准件使用寿命长, 运行稳定, 机械结构设计最合理, 设备性能最优化, 为整套设备的稳定高效运行提供强有力技术保障。

Measures like finite element analysis are applied to the mechanical structure design to ensure long lifespan of the components, stable and efficient operation, the best structure design and optimum performance of the whole equipment.

YR2旋臂式机械手

YR2 Swing arm robot



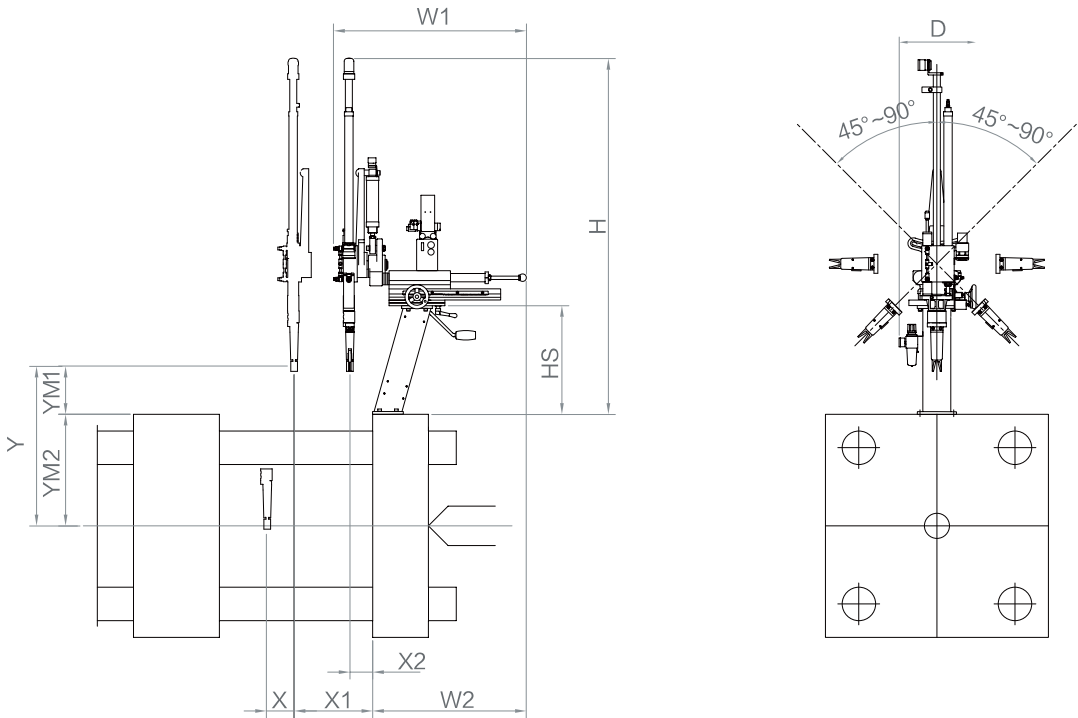
多程序操作
Multi-program operating system

内置20种标准化程序, 及79组可编程程序
Built-in 20 standard programs and 79 programmable programs



采用铸件工艺
Casting processes

刚性高, 吸震性好
High rigidity and good vibration absorption



产品参数 Specifications

机型 Model	主臂最 远位置	主臂引 拔行程	手臂上 下行程	待机 高度	安装面 下行长度	机器 宽度	机器 长度	横行 行程	机器 高度	底座 高度	负载	适用 注塑机
	X1 (mm)	X2 (mm)	Y (mm)	YM1 (mm)	YM2 (mm)	W (mm)	L (mm)	Z (mm)	H (mm)	Hs (mm)	Payload (kg)	IMM (ton)
YR255C	300	100	545	165	380	670	/	/	1300	390	2	60-160T



气缸缓冲手臂 Arm with cushion cylinder

手臂上下采用气缸缓冲, 手臂电气全浪管保护, 轻巧耐用。
The up-and-down arm is equipped with cylinder with shock absorption function. The wires are protected with corrugated conduits, which is light and durable.

置物方向 Direction of part placement

产品前后安全门放置可任意调整, 模内对位快速安全。
Easy adjustment of the part placement, quick and safe positioning inside the mold

性价比高 High cost-performance ratio

性价比高, 全气动驱动模式。
Highly cost-effective, fully pneumatically-driven

HC多轴控制器(脉冲式)

HC Multi AC Servo Drivers Controller (Impulse Type)



详细描述:

- 8.4寸触摸屏;
- 采用了多CPU控制、系统响应速度快,动作控制精度高,定位精度0.01mm;
- 堆叠、用户教导、电动调位等多项功能。动作为示教模式,满足客户的各种控制需求;
- 实时检测机器运行情况,及时显示故障报警及故障原因,确保机器的使用安全;
- 可控制6个伺服轴进行动作,可扩展IO口,满足机器外部复杂控制;
- 机器参数,模号程序均可通过U盘在不同机器间导入导出;
- 可随时使用U盘更新最新系统,持续获得稳定支持;

Descriptions:

- 8.4 Inches Touch Screen HMI;
- Multiple CPU control improves system response and movement accuracy, movement precision up to 0.01mm;
- The function of stacking, teaching, step by step adjusting meet different needs of the customer;
- Real-time operation monitoring and protection function will alarm and show the trouble details immediately to ensure the safety of the machine;
- To easily meet the requirement of complex automation system, it can control up to 6 axis as well as the extension IO points;
- Convenient to upgrade the program and specification with USB Key among different machines;
- The operation system could be upgraded by USB Key for continued technical support;

LNC多轴控制器(总线式)

LNC Multi AC Servo Drivers Controller (Bus-type)



详细描述:

- 7" 触控屏幕;
- 全开放式的编程控制系统;
- 绝对值总线伺服控制,速度更快,精度更高;
- 内置存储记忆(储存程式100组以上);
- 多层功能权限设定全;
- 支持以太网,USB,方便工业4.0数据交换;
- 磁吸式固定设计;
- IP65 的防水、防尘等级;
- 支持总线型式;
- 多轴伺服控制联动;
- 最大可扩充至128点输出/输入;
- 标配2段式安全开关;
- 标配3种语系,可支持自主翻译;

Descriptions:

- 7" inches HMI ;
- Fully open programmable control system;
- Absolute value bus-style control will help the robot running faster and higher accuracy;
- Built-in EP-ROM (With capability to store more than 100 sub program);
- Different level permission setting ;
- The compliance of TCP/IP protocol and USB key contribute to exchange data in industry;
- Magnetic fixation design;
- IP 65 which ensure up to waterproof and dustproof grade;
- MECHATROLINK- II/ RTEX/ EtherCAT;
- Simultaneous servo control for multiple axis;
- Up to 128 IO points extendable;
- 2 stage safety switch standard;
- 3 kinds of language standard, supporting customized language;

共同点 Common Points:

- | | |
|---|-------------------------------------|
| ● 自由装箱码堆功能 Free Stacking Function | ● 模具数据导出U盘 Data backup with USB key |
| ● 模内模外侧姿控制 Horizontal turning in mold area is forbidden | ● 安全区域设置 Safety area setting |
| ● 不良品检测 defective product detection | ● 子程序教导 Sub program teaching |
| ● 模外待机 Standby at outside of the mold | ● 运行周期监控 Operation cycle monitoring |
| ● 硬件模区保护 Mold area hardware protection | ● 保养提示功能 Maintenance reminds |
| ● 输送带输出 Conveyor with control | ● E12/67 接口 E12/67 interface |
| ● 标配(预留4真空,4抱具,4夹具) | ● 抽检功能 Spot check |
| Standard Configuration (4 Vacuums, 4 suckers, 4 grippers)(IO point) | |